



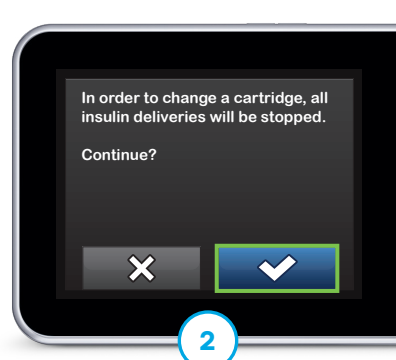
### Before You Begin

Have a newly filled cartridge ready.



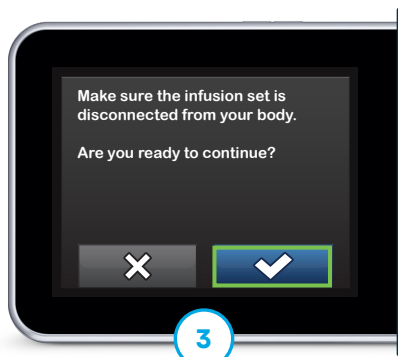
1

From the Home screen, tap **OPTIONS**, **Load**, and then **Change Cartridge**.



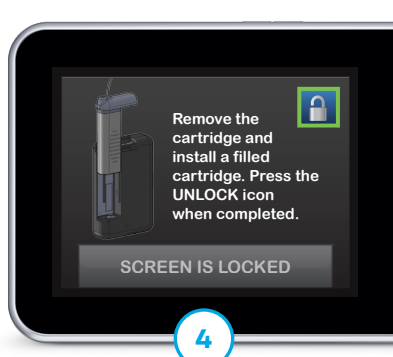
2

Tap **✓** to stop insulin delivery.



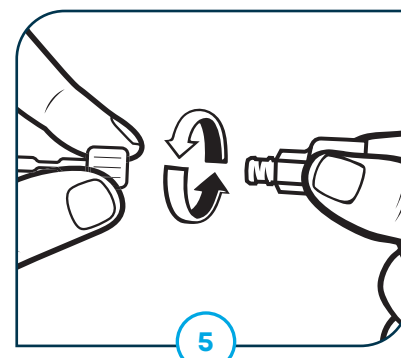
3

Disconnect the infusion set from the on-body site and tap **✓** to continue.



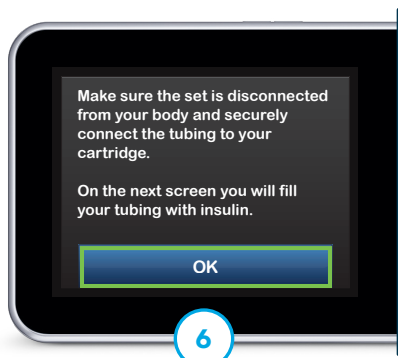
4

Install the newly filled cartridge and tap the unlock icon. Tap **✓** to continue.



5

Connect the infusion set tubing to the cartridge.



6

Tap **OK** to confirm the infusion set is disconnected.



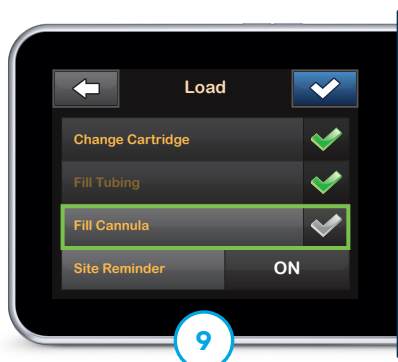
7

Hold the pump and tubing vertically and then tap **START**.

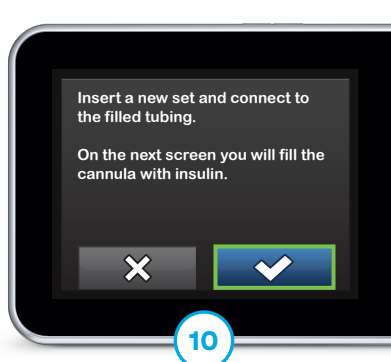


8

Tap **STOP** after three drops of insulin are seen at the end of the set.



Tap **DONE** to confirm. If needed, tap **Fill Cannula**. Otherwise, skip to Step 13.



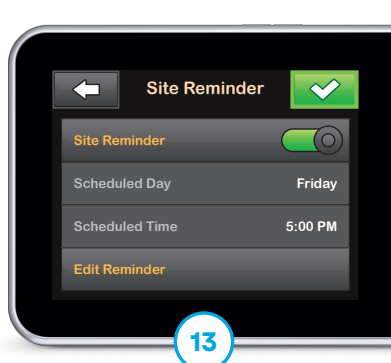
Reconnect tubing to existing or newly inserted infusion set. Tap **✓** to continue.



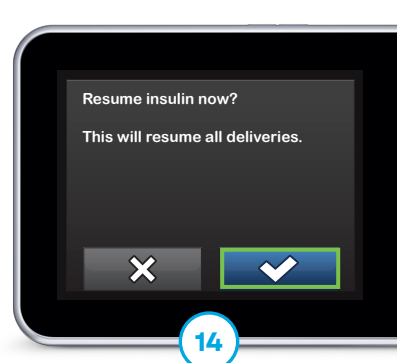
If needed, tap **Edit Fill Amount** and make selection. Otherwise, skip to next step.



Tap **START** to fill cannula.



If desired, tap **Site Reminder**. Tap **✓** to save or tap **Edit Reminder** to make changes. Otherwise, skip to next step.



Tap **✓** to continue and then again to resume insulin delivery.

Visit [tandemdiabetes.com/support](https://tandemdiabetes.com/support) for additional resources.

These instructions are provided as a reference tool for individuals who are already familiar with the use of a Tandem Diabetes Care insulin pump. Not all screens are shown. For more detailed information on the operation of the t:slim X2 insulin pump, please refer to its user guide.

**Important Safety Information:** RX ONLY. The t:slim X2 insulin pump with Control-IQ+ technology is intended for the management of type 1 diabetes mellitus in individuals 2 years of age and greater. Visit [tandemdiabetes.com/safetyinfo](https://tandemdiabetes.com/safetyinfo) for additional important safety information.

**WARNING:** Control-IQ+ technology should not be used by anyone under the age of 2 years old, who require less than 5 units of insulin per day, or who weigh less than 20 pounds.

© 2025 Tandem Diabetes Care, Inc. All rights reserved. Tandem Diabetes Care, Tandem logos, t:slim X2, and Control-IQ+ are either registered trademarks or trademarks of Tandem Diabetes Care, Inc. in the United States and/or other countries. ML-1002614\_H



**TANDEM**  
Diabetes Care

(877) 801-6901  
[tandemdiabetes.com](https://tandemdiabetes.com)

FOR USE IN THE  
UNITED STATES ONLY

