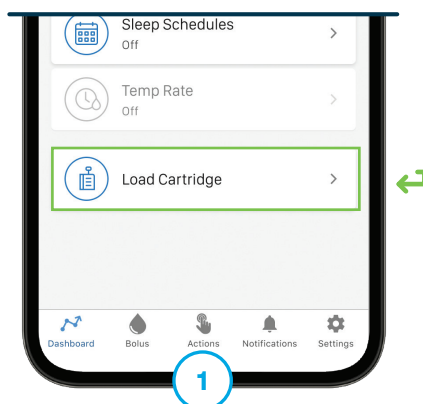
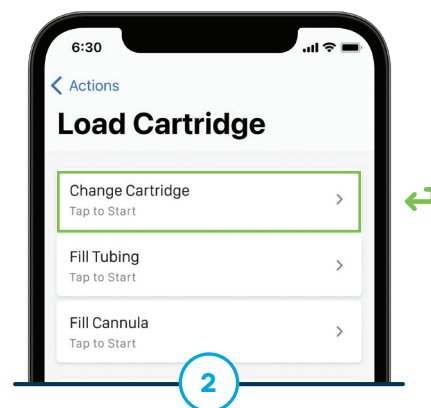




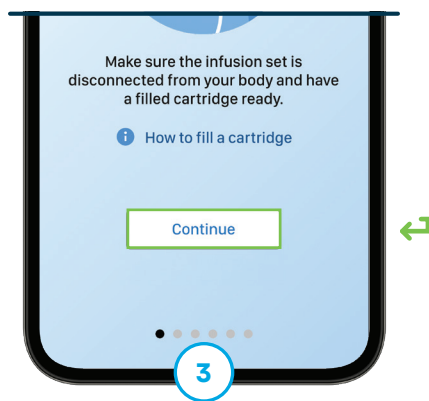
Before You Begin
Have a newly filled
cartridge ready.



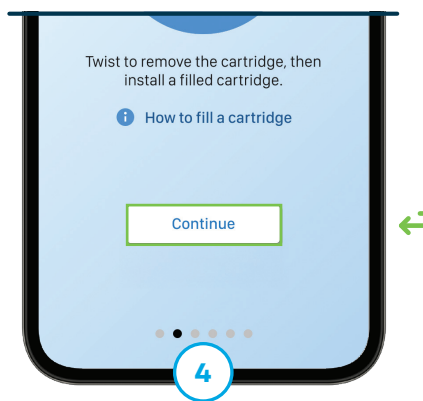
Tap **Actions** from the
Navigation bar and then
Load Cartridge.



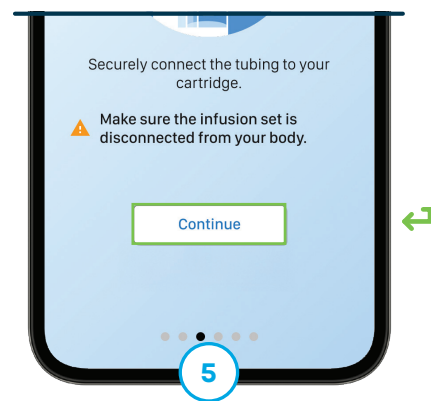
Tap **Change Cartridge** and
then **Yes** to stop insulin
delivery.



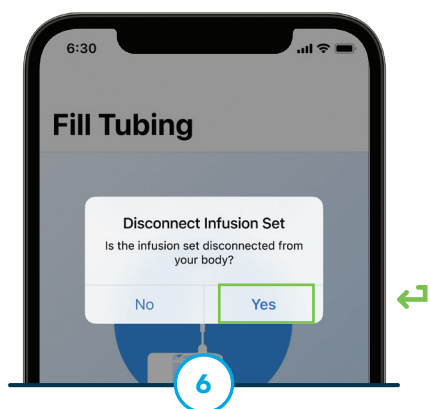
Disconnect the infusion set
from the on-body site and tap
Continue.



Install the newly filled
cartridge and tap **Continue**.
Tap **Continue** again.



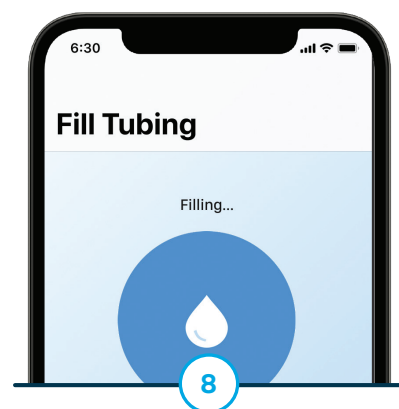
Connect the infusion set
tubing to the cartridge and
tap **Continue**.



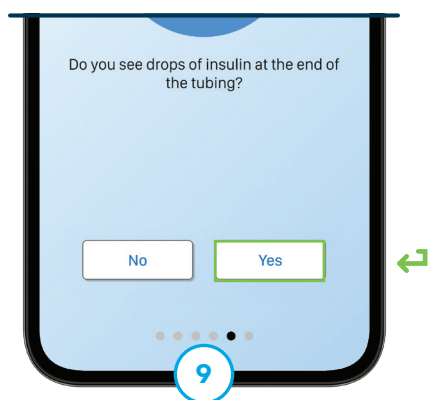
Tap **Yes** to confirm the
infusion set is disconnected.



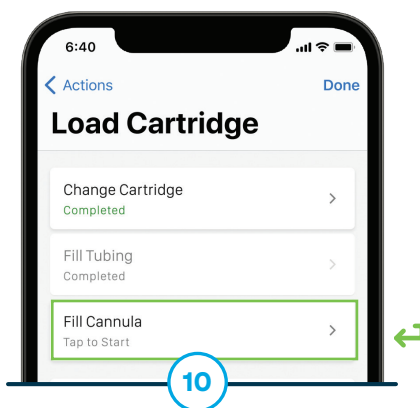
Hold the pump and tubing
vertically. Press and hold the
Pump button.



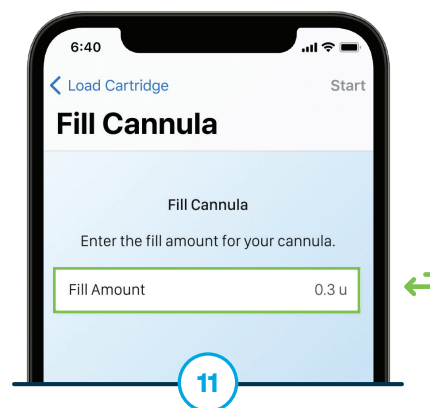
Release Pump button after
three drops of insulin are seen
at the end of the set.



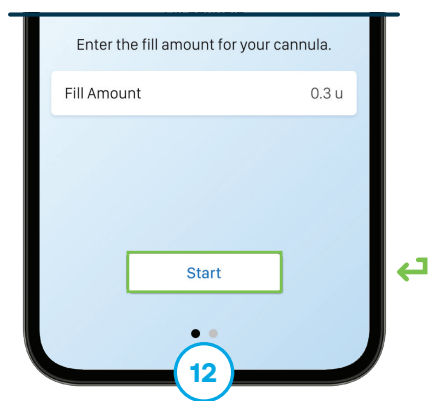
Tap **Yes** and reconnect tubing to existing or newly inserted infusion set.



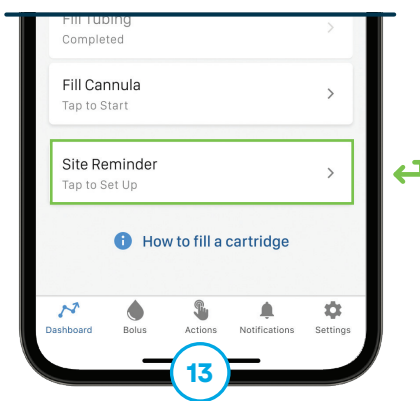
Tap **Finish**. If needed, tap **Fill Cannula**. Otherwise, skip to Step 13.



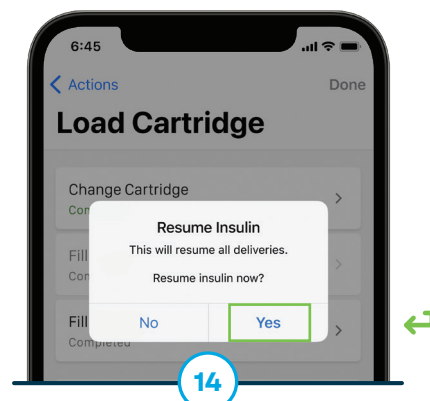
If needed, tap **Fill Amount** to edit. Otherwise, skip to next step.



Tap **Start** to fill cannula. Tap **Finish** to continue.



If desired, tap **Site Reminder** and turn the toggle on. Make changes and/or tap **Save**. Otherwise, skip to next step.



Tap **Done** to continue and then **Yes** to resume insulin delivery.

Visit tandemdiabetes.com/support for additional resources.

These instructions are provided as a reference tool for individuals who are already familiar with the use of a Tandem Diabetes Care insulin pump. Not all screens are shown. For more detailed information on the operation of the Tandem Mobi insulin pump, please refer to its user guide.

Important Safety Information: RX ONLY. The Tandem Mobi insulin pump with Control-IQ+ technology is intended for the management of type 1 diabetes mellitus in individuals 2 years of age and greater. Visit tandemdiabetes.com/safetyinfo for additional important safety information.

WARNING: Control-IQ+ technology should not be used by anyone under the age of 2 years old, who require less than 5 units of insulin per day, or who weigh less than 20 pounds.

© 2025 Tandem Diabetes Care, Inc. All rights reserved. Tandem Diabetes Care, Tandem logos, Tandem Mobi, and Control-IQ+ are either registered trademarks or trademarks of Tandem Diabetes Care, Inc. in the United States and/or other countries. ML-1012731_B



TANDEM
Diabetes Care

(877) 801-6901
tandemdiabetes.com

FOR USE IN THE
UNITED STATES ONLY

