

1

Hold the indented sides of the introducer needle with one hand and gently remove the front backing paper with the other.

**Note:** Clean the insertion area with an alcohol prep pad or other recommended skin preparation.



2

Gently twist and pull off the guard from the needle.

**Caution:** DO NOT touch or bend the introducer needle.



3

Pinch the skin at your selected insertion area with one hand to help lift the skin away from any muscle tissue.



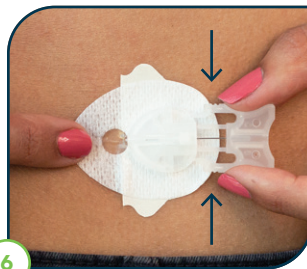
4

Insert the needle completely and release the pinched skin. This will leave the cannula in the layer of fat just below the skin, but above muscle tissue.



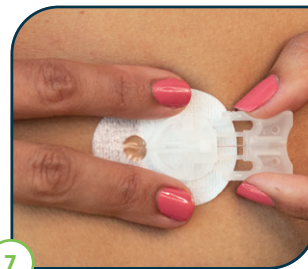
5

Press down on the front portion of the tape to secure the adhesive to your skin.



6

Gently place your finger in front of the clear window, squeeze the grooved sides with your other hand, and pull the introducer needle straight back.



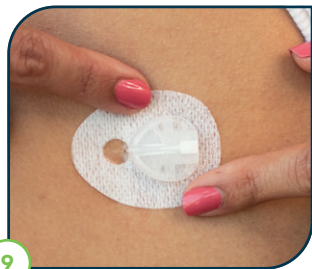
7

If you have trouble removing the introducer needle, try straddling the clear window with two fingers while pulling straight back.



8

Carefully lift the cannula housing to expose the back, and remove the rest of the backing paper.



9

Massage the adhesive tape thoroughly onto your skin.

**Caution:** DO NOT attempt to straighten the adhesive if curled.



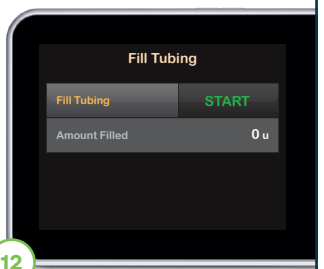
10

To attach the infusion set tubing to the lock connector on the cartridge, twist the connector clockwise until tight, then twist another quarter of a turn to ensure a secure connection.



11

Remove the protective cap from connector needle.



12

Fill your tubing according to the instructions detailed in the Tandem Diabetes Care insulin pump user guide.

**Caution:** DO NOT fill tubing while the infusion set is connected to your body.



13

When filling the tubing, hold the connector needle pointing down. Make sure there are no gaps of air in the tubing. Stop after three drops of insulin have appeared.

**⚠ Caution:** DO NOT fill tubing while the infusion set is connected to your body.



14

Hold the connector needle at the point where it connects with the tubing and with the open notches of the connector needle facing your body, insert it into the cannula housing. You should hear a click.

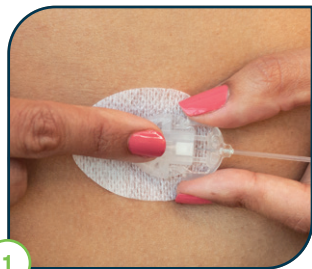


15

Fill cannula 0.7 units.

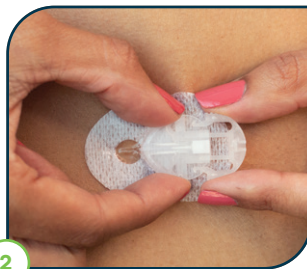
**⚠ Caution:** ALWAYS check glucose levels 1-2 hours after inserting to make sure it's working properly.

## Disconnect



1

Place your finger on top of the cannula housing, gently squeeze the grooved sides of the infusion set and pull straight out.



2

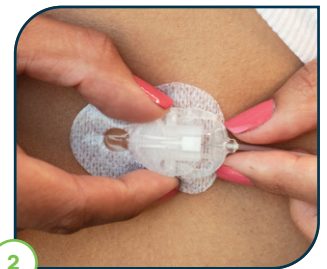
Insert the protective cap into the connector needle. Insert the disconnect cover into the cannula housing.



1

Remove the protective cap from the connector needle. With the needle pointing down, fill the tubing until insulin drops from the needle.

**⚠ Caution:** DO NOT fill tubing while the infusion set is connected to your body.



2

Remove the disconnect cover from the cannula housing. Hold the connector needle at the point where it connects with the tubing and insert it into the cannula housing. You should hear a click.

## Reconnect

This reference sheet is intended to supplement the instructions included with your VariSoft infusion set. Please refer to those instructions (available for download at [tandemdiabetes.com/support](https://tandemdiabetes.com/support)) for a complete list of warnings and precautions.

**Important Safety Information:** Caution: Federal Law (United States of America) restricts this device to sale by or on the order of a physician. These infusion sets are indicated for the subcutaneous infusion of insulin administered by the t:slim X2 insulin pump for the treatment of diabetes. These infusion sets are indicated for single use. For contraindications, warnings, precautions, and other important information, please refer to the instructions for use accompanying the infusion sets.

© 2022 Tandem Diabetes Care, Inc. All rights reserved. Tandem Diabetes Care, t:lock, t:slim X2, and VariSoft are either registered trademarks or trademarks of Tandem Diabetes Care, Inc. in the United States and/or other countries. All third-party marks are the property of their respective owners. ML-1009396\_A

