



## Hypoglycemia

Low glucose (hypoglycemia) occurs when there is too much insulin and not enough glucose in your blood. Some of the more common causes of hypoglycemia are increased or unexpected activity and overestimation of carbohydrate leading to a larger bolus than needed.

## Hyperglycemia

High glucose (hyperglycemia) occurs when there is too much glucose and not enough insulin in your blood. Stress, illness, medication, inactivity, and underestimation of carbohydrate leading to an inadequate bolus are all common causes of high glucose.

## Diabetic Ketoacidosis

Diabetic ketoacidosis occurs when there is not enough

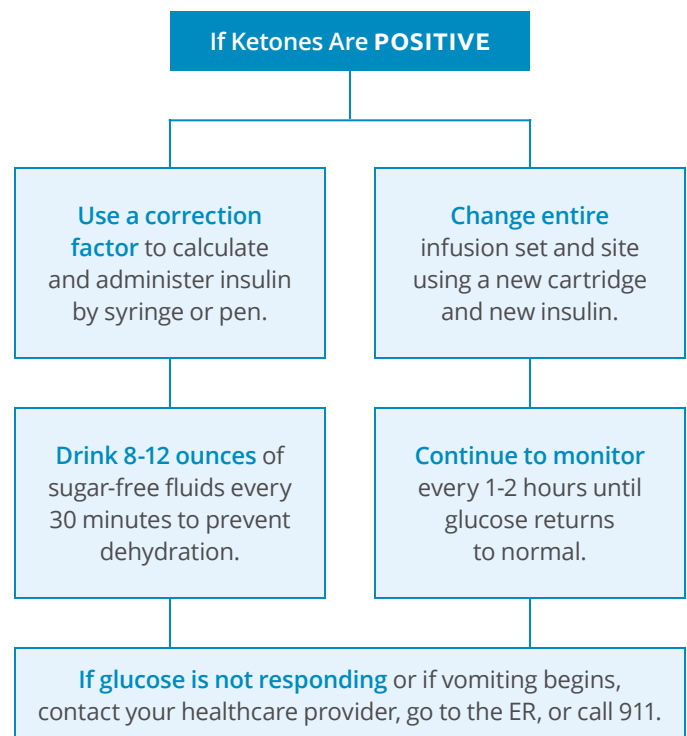
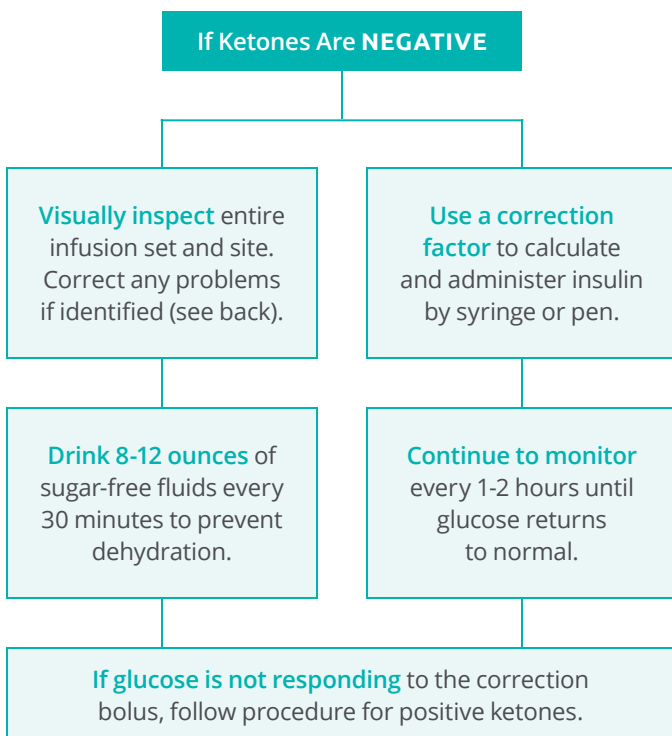
insulin available to help glucose enter the cells to be used for energy. Without glucose, fat is used for energy resulting in a waste product called ketones. If too many ketones accumulate, (which can happen rapidly), the condition becomes very serious and medical attention is required.

Symptoms of Diabetic Ketoacidosis	
Early Symptoms	Severe Symptoms
Thirst or dry mouth	Nausea and vomiting
Frequent urination	Abdominal pain
High blood glucose	Weakness or fatigue
Ketones in urine	Labored breathing

## Treatment Guidelines

If your glucose is above 250 mg/dL two times in a row and/or is not responding to a correction bolus, test for ketones, change entire infusion set and site, correct by injection, and follow guidelines below.

When correcting for high glucose by syringe or pen, you can still track insulin on board (IOB) from your t:slim X2™ insulin pump. Just follow the instructions included in the Pump Tip on the back of this flyer to access this feature.



## Troubleshooting

The chart below outlines possible causes that will need to be investigated when your glucose is not responding to treatment. If the problem continues or you do not find a solution, contact your healthcare provider (HCP).



**PUMP TIP:** To track IOB when dosing by injection, disconnect infusion set at site, deliver a bolus equal to the injection dose, and then reconnect.

Possible Issues	What to Check	If Yes . . .	
Infusion Set and Site	Infusion set leaking at site	Wetness at site	Change infusion set at site and rotate site
	Set not changed within 2-3 days	Load history or site reminder	Change infusion set at site and rotate site
	Infection at site	Redness, swelling at site	Change infusion set at site and rotate site
	Crimped, dislodged, or clogged cannula	Infusion site	Change infusion set at site and rotate site
	Cannula placed in scar tissue	Infusion site	Change infusion set at site and rotate site
	Air bubbles in tubing	Air bubbles or spaces in tubing	Detach tubing from site, fill tubing with insulin to push air out, and reattach tubing to site
	Tubing not filled when infusion set was last changed	Load history	Detach tubing from site, complete load sequence, and reattach tubing to site
	t:lock™ infusion set connector is loose from tubing	Tubing connection	Detach tubing from site, tighten t:lock connector, fill tubing with insulin to push air out, and reattach tubing at site
Insulin Pump	Insulin expired, denatured, or exposed to extreme temperature	Insulin quality in vial or storage temperature	Discard insulin and cartridge, fill new cartridge with insulin, and change entire infusion set
	Insulin in cartridge longer than recommended	Load history	Discard insulin and cartridge, fill new cartridge with insulin, and change entire infusion set
	Programming error (eg, insulin dose settings and time/date)	Personal Profiles and time/date settings	Reprogram as necessary
	Alarm sounded	Alarm history	Identify alarm and take action as outlined in your t:slim X2 insulin pump User Guide
	Battery dead	Battery icon	Charge battery
	Insulin pump is not controlling glucose	Discuss with your HCP	Contact HCP to discuss need for evaluation and adjustments to settings
Behaviors	Bolus error (missed, delivered after meal or did not correct)	Bolus history	Bolus as needed to correct
	Life influences	Stress, medication, illness, or inactivity	Discuss action plan with your HCP



(877) 801-6901  
[tandemdiabetes.com/training](https://tandemdiabetes.com/training)

CONNECT WITH US ON:



**t:slim X2** Insulin Pump

**Important Safety Information:** Caution: Federal (USA) law restricts this device to sale by or on the order of a physician. The t:slim X2 insulin pump with interoperable technology is an alternate controller enabled (ACE) pump that is intended for the subcutaneous delivery of insulin, at set and variable rates, for the management of diabetes mellitus in people requiring insulin. The pump is able to reliably and securely communicate with compatible, digitally connected devices, including automated insulin dosing software, to receive, execute, and confirm commands from these devices. The pump is indicated for use in individuals 6 years of age and greater. The pump is intended for single patient, home use and requires a prescription. The pump is indicated for use with NovoLog or Humalog U-100 insulin. The t:slim X2 pump must be removed before MRI, CT, or diathermy treatment. Visit [tandemdiabetes.com/safetyinfo](https://tandemdiabetes.com/safetyinfo) for additional important safety information.

© 2020 Tandem Diabetes Care, Inc. All rights reserved. Tandem Diabetes Care is a registered trademark and t:lock and t:slim X2 are trademarks of Tandem Diabetes Care, Inc. All third-party marks are the property of their respective owners. ML-1005717\_A