

Distributed by:



11045 Roselle Street, San Diego, CA 92121, USA
1-877-801-6901 • 1-858-202-6500
www.tandemdiabetes.com

INS-825-1

Infusion Set

contact™ detach

Instructions for use

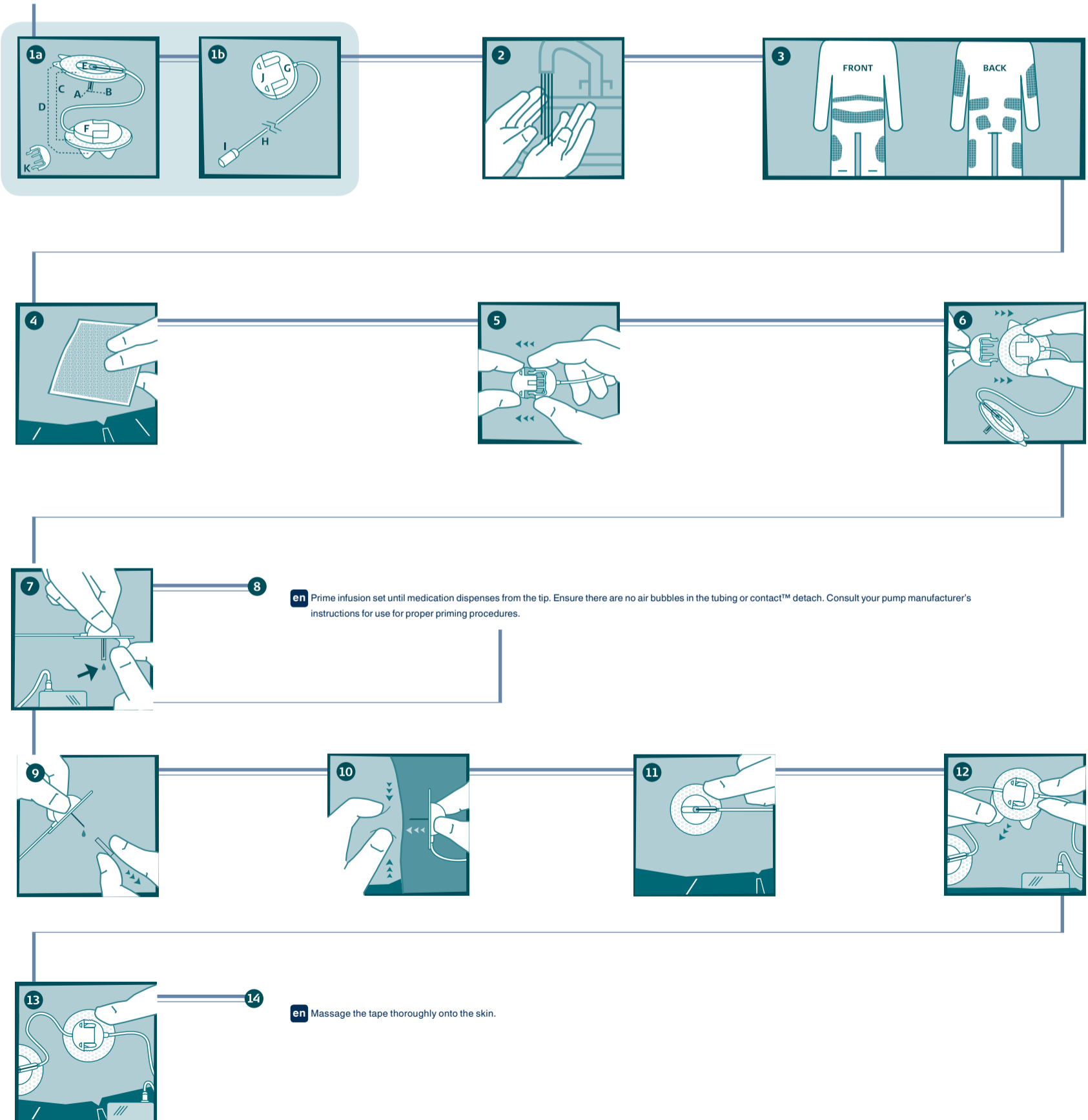


Unomedical a/s · Aaholmvej 1-3 · Østed · 4320 Lejre · Denmark · www.infusion-set.com · Made in Mexico



Contents

- [A] 90-degree steel needle • [B] Needle guard • [C] Adhesive tape • [D] Backing paper • [E] Retaining wings • [F] Coupling housing • [G] Connector needle • [H] Tubing
- [I] Luer connector • [J] Circular protective cap • [K] Disconnect cover



INDICATIONS AND USAGE:

The contact™ detach is indicated for subcutaneous infusion of medication, including insulin, administered by an external pump.

PRODUCT DESCRIPTION

contact™ detach is a 90 degree, stainless steel needle infusion set with a standard luer lock connection.

CONTRAINDICATIONS

contact™ detach is neither intended nor indicated for use with blood, blood products or intravenous infusion (I.V.).

WARNINGS

- The contact™ detach infusion set is only sterile and non-pyrogenic if the packaging is unopened and undamaged. Do not use it if the packaging is already open or is damaged.
- Go through instructions for use carefully before inserting contact™ detach, as failure to follow instructions may result in pain or injury.
- Inaccurate medication delivery, infection and/or site irritation may result from improper insertion and maintenance of infusion site.

- When using contact™ detach for the first time, do so in the presence of a healthcare provider.
- Reuse of the infusion set may cause infection, site irritation, or damage to the cannula/needle. A damaged cannula/needle may lead to inaccurate medication delivery.

PRECAUTIONS

- Never prime the infusion set or attempt to free a clogged tubing while the infusion set is inserted. You may accidentally inject too much medication.
- Check the infusion set frequently to ensure that the steel needle remains firmly in place. If the steel needle is not in place, change to a new infusion set.
- contact™ detach is a single use item which must be disposed of after usage. For available sharps disposal containers, please consult your local pharmacy.
- Do not clean or re-sterilize.
- Be sure that the needle guard is removed before insertion.
- The contact™ detach needle must not be bent prior to insertion.
- Do not leave air in the infusion set. Make sure to fill contact™ detach completely.
- Do not in any way put disinfectants, perfumes, deodorants or

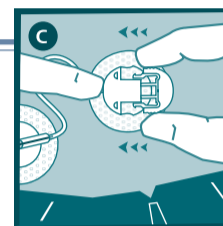
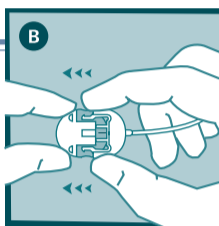
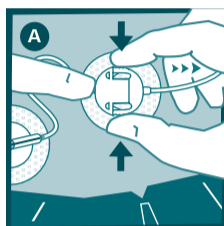
- other products containing alcohol or disinfectants in contact with the luer lock connector and the tubing, as these may affect the integrity of the infusion set.
- Replace with a new infusion set if the adhesive tape becomes loose.
- Change the infusion set every 24-48 hours, or as recommended by your healthcare provider.
- Dispose of used contact™ detach safely, so that no one can prick or injure themselves with it.
- If infusion site becomes inflamed, replace with a new infusion set and use new site until the first site has healed.
- Use aseptic techniques when temporarily disconnecting contact™ detach, and seal the coupling housing with the cover provided. Consult with healthcare provider on how to compensate for missed medication when disconnected.
- Protect the contact™ detach from direct sunlight. Store at room temperature.

RECOMMENDATIONS

- For use with insulin:
- If blood glucose level becomes unexplainably high, or occlusion alarm occurs, check for clogs and leaks. If in doubt, change infusion set. Discuss plan for rapid replacement of insulin with healthcare provider should any

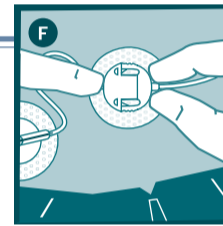
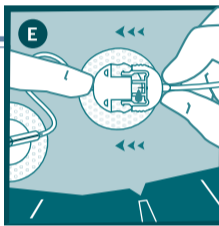
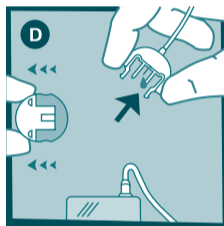
- of these problems arise. Test blood glucose level to make sure problem is corrected.
- Check the blood glucose level 1-2 hours after introducing contact™ detach and check the infusion site several times a day, and measure your blood glucose regularly.
- Do not change infusion set just prior to bedtime, unless blood glucose can be checked 1-2 hours after insertion.
- Carefully monitor blood glucose levels while disconnected and after reconnecting

DISCONNECTING



Click

RECONNECTING



Click



en Use by (year / month)



en Do not re-use



en Lot number



en Sterilized using ethylene oxide



en Reference / model number



en Attention: see accompanying documents



en Manufacturer

Rx ONLY

