

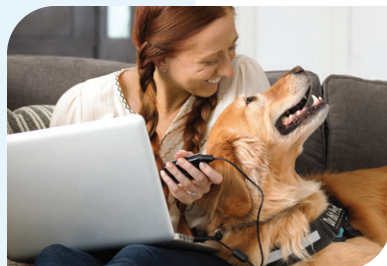


T:SLIM X2 INSULIN PUMP

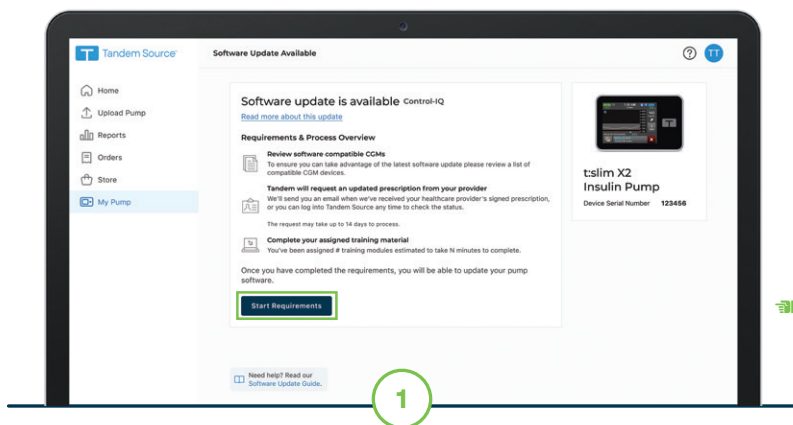
# Update Pump Software



These instructions will show users how to remotely update their t:slim X2 insulin pump with new features.

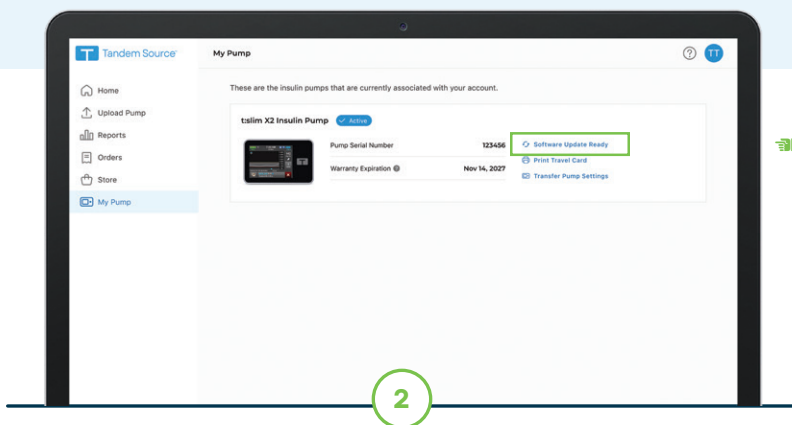


**Note:** These instructions are provided as a reference tool for pump users and caregivers who are already familiar with the use of an insulin pump and with insulin therapy in general. Not all screens are shown. For more detailed information on the operation of Tandem Diabetes Care products, please refer to their user guides.

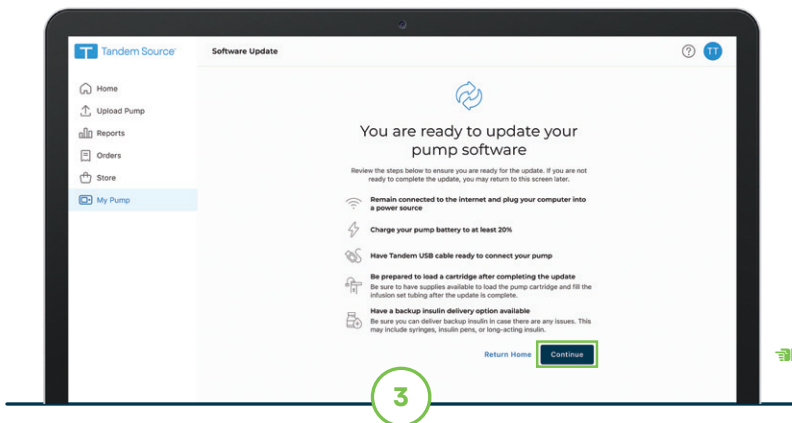


Log in to the Tandem Source platform. Select **My Pump** from the Navigation sidebar and then **Software Update Available**.

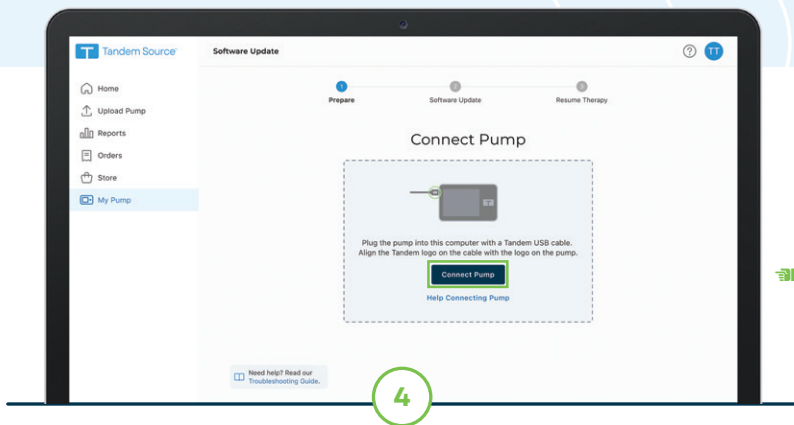
Additional training and other preliminary steps may be required to access certain software updates. Click **Start Requirements** and follow the on-screen instructions.



Certain preliminary steps may take several days, so if you are returning to Tandem Source from a prior session, select **My Pump** from the Navigation sidebar and then **Software Update Ready**. Otherwise, skip to Step 3.

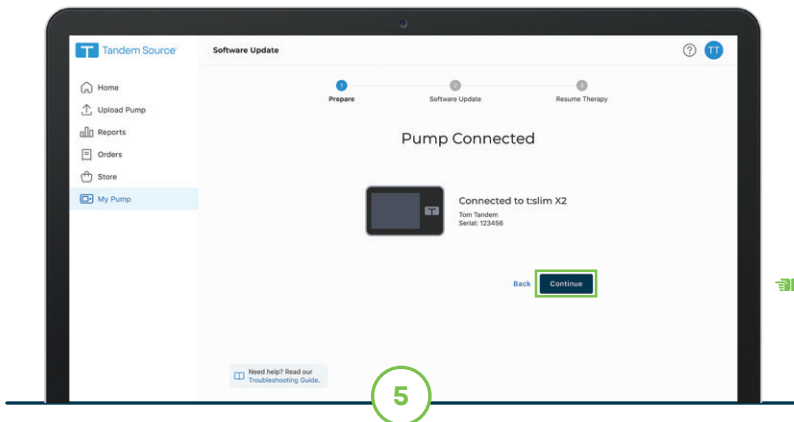


Review the provided information to ensure that the user is prepared for the update and then click **Continue**. On the Important Safety Information screen, click the square next to each safety step to acknowledge guidance. Click **Continue**.



Connect the micro-USB end of the USB cable provided by Tandem Diabetes Care to the insulin pump and connect the other end to a USB port on the user's computer. Click **Connect Pump**.

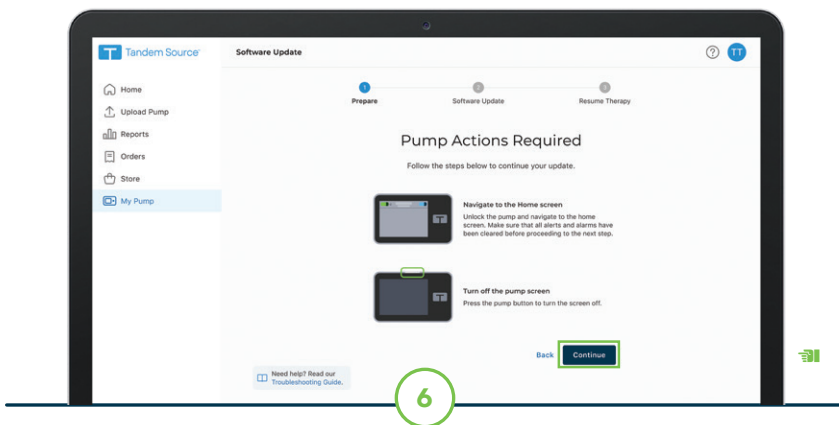
**Note:** If an error message appears, click Help Connecting Pump for connection tips.



A Pump Connected screen will appear if the connection is successful. Confirm the pump serial number is accurate before clicking **Continue**.

Flip to back to continue →

## Update Pump Software (continued)



For the remaining steps of this Quick Reference Guide, please follow the on-screen instructions within the Tandem Source platform and complete the required actions on the t:slim X2 insulin pump. Click **Continue**.

**Important Safety Information:** RX ONLY. The t:slim X2 insulin pump with interoperable technology is intended for the subcutaneous delivery of insulin, at set and variable rates, for the management of diabetes mellitus in people requiring insulin. The pump is able to reliably and securely communicate with compatible, digitally connected devices, including automated insulin dosing software, to receive, execute, and confirm commands from these devices. The pump is intended for single patient use. The pump is indicated for use with NovoLog or Humalog U-100 insulin. The pump is indicated for use in individuals 6 years of age and greater. Users of the pump must: be willing and able to use the insulin pump and all other system components in accordance with their respective instructions for use; test blood glucose levels as recommended by their healthcare provider; demonstrate adequate carb-counting skills; maintain sufficient diabetes self-care skills; see healthcare provider(s) regularly; and have adequate vision and/or hearing to recognize all functions of the pump, including alerts. The t:slim X2 pump must be removed before MRI, CT, or diathermy treatment. Visit [tandemdiabetes.com/safetyinfo](https://tandemdiabetes.com/safetyinfo) for additional important safety information.

The Tandem Source platform is intended for use by individuals with diabetes mellitus who use Tandem Diabetes Care insulin pumps, their caregivers, and their healthcare providers in home and clinical settings. The Tandem Source platform supports diabetes management through the display and analysis of information uploaded from Tandem insulin pumps.

© 2024 Tandem Diabetes Care, Inc. All rights reserved. Tandem Diabetes Care, Tandem logos, t:slim X2, and Tandem Source are either registered trademarks or trademarks of Tandem Diabetes Care, Inc. in the United States and/or other countries. All third-party marks are the property of their respective owners. ML-1014820\_A



**TANDEM**  
Diabetes Care

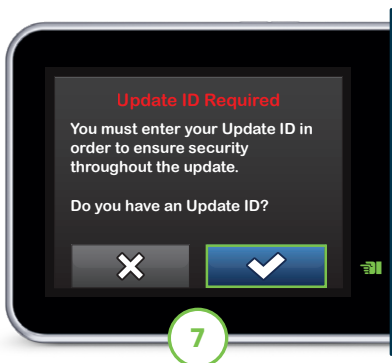
(877) 801-6901  
[tandemdiabetes.com](https://tandemdiabetes.com)



FOR USE IN THE  
UNITED STATES ONLY





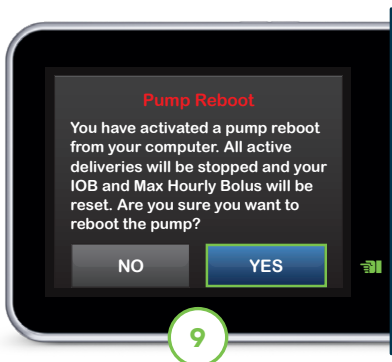
**Pump Tip:** If there was an active CGM sensor session before the update process was started, follow instructions in the pump user guide to resume the session.



Tap  and enter the Update ID displayed within Tandem Source. Tap  to continue.



The pump verifies the Update ID is correct.



A Pump Reboot screen appears. Tap **Yes** to begin the reboot and confirm that insulin deliveries will be stopped.




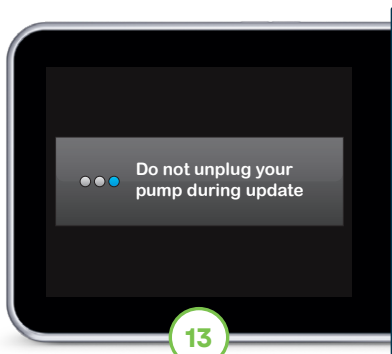
The software update begins. Do not disconnect from the Internet or unplug the pump from the computer during this process.



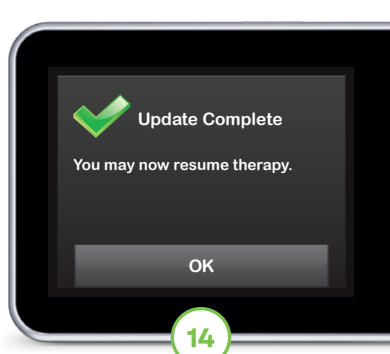
If prompted, unlock the pump screen. Otherwise, skip to Step 14.




Using the keypad on the pump, enter the Update ID again and tap  to continue.



Do not disconnect from the Internet or unplug the pump from the computer during this process.



The update is complete.

 **Note:** Click Resume Therapy Guide on the Tandem Source platform for additional instructions on how to safely resume insulin delivery.